

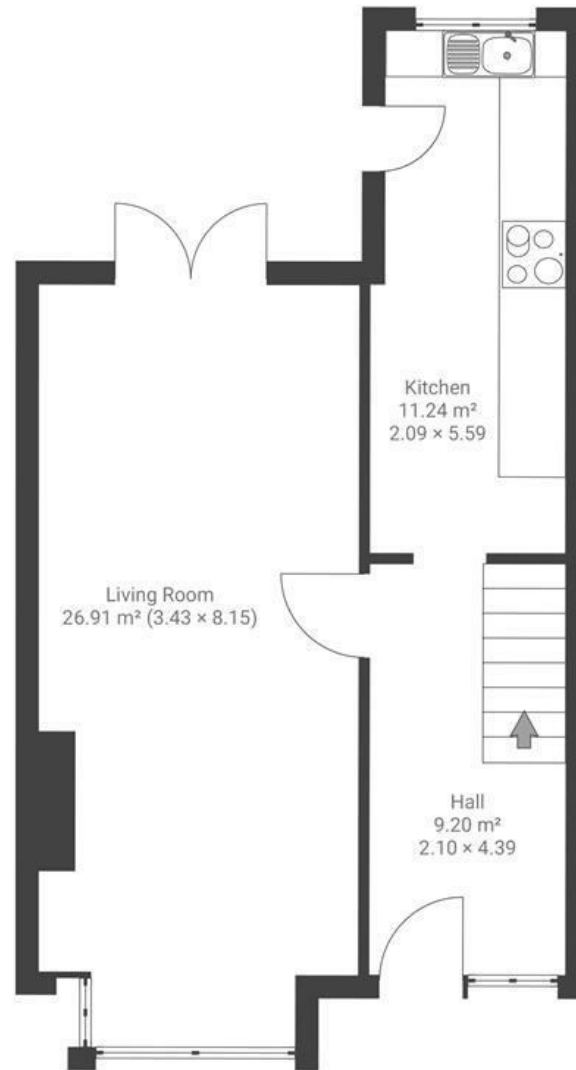
Bloomfield Road

BRISLINGTON

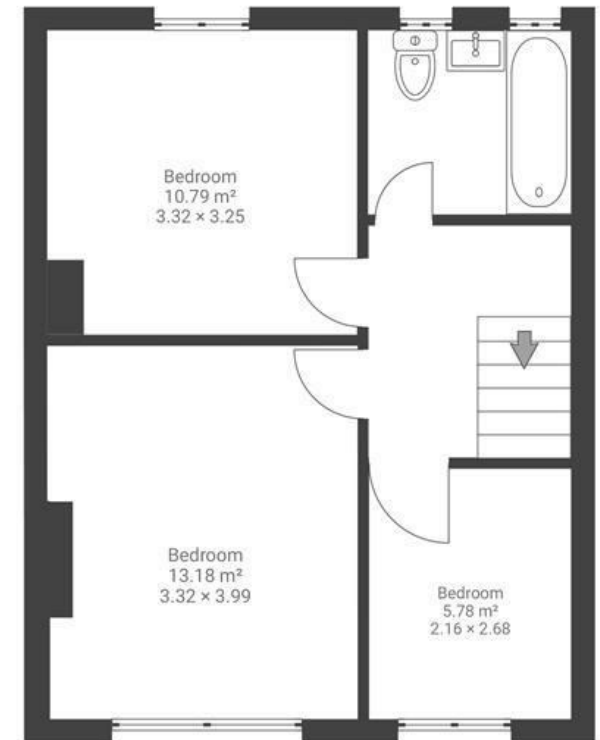
APPROXIMATE FLOOR AREA
89.6 SQM / 964 SQFT



GROUND FLOOR



FIRST FLOOR



Boardwalk

Bloomfield Road

, BRISTOL

£

£370,000



BS4 3QX

zzz

3 Bedrooms



1 Bathrooms

"I have taken care and pride in updating my home. I want to leave it a better place than I found it for its next owners and I'll be sorry to leave. I love seeing the garden come to life in the spring and watching the magnolia tree bloom. My home is light and feels airy, which I love about it. The garden is a real sun trap."

